

Design Features:

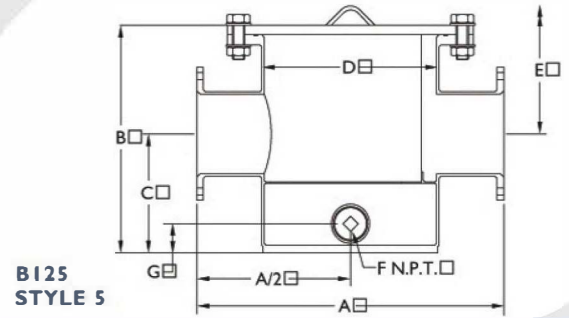
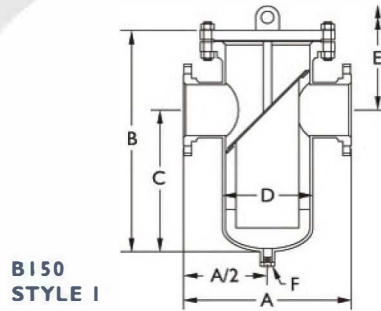
- Standard sizes from 2" - 24". Larger sizes available.
- Available with RF or RTJ flanged (ASME B16.5) or Buttweld (ASME B16.9) end connections.
- Standard thru bolt cover design.
- Custom designs are available.
- Perforated screens are standard.
- May be installed in horizontal pipelines.
- Strainers designed to meet the requirements of ASME B31.1, ASME B31.3 and/or ASME Section VIII, Div. 1.
- Drain is standard and is complete with plug.
- Vents, differentials and special covers are optional.

Parts List and Standard Materials

Part	Carbon Steel	Low Temp. Carbon Steel (-50; F)	Stainless Steel ¹
Shell	A53 E/B / A106-B	A333-6	A312
Nozzles	A53 E/B / A106-B	A333-6	A312
Reinforcement Pads	A516-70	A516-70	A240
Flanges	A105	A350-LF2	A182
Heads	A234-WPB / A516-70	A420-WPL6	A403-WP
Coupling/threadolets	A105	A350-LF2	A182
Plug	A105	A350-LF2	A182
Basket	304 SS	304 SS	304 SS
Gasket	304 SS Spiral Wound	304 SS Spiral Wound	304 SS Spiral Wound
Stud	A193-B7	A193-B7	A193-B8-1
Nut	A194-2H	A194-2H	A194-8

Upper Pressure Limits (Non-Shock) and Lower Temperature Limits (Unless otherwise specified)

	Body Material	Maximum Design Pressure at 100;F psig (Bars) ¹	Lower Temperature Limit - M.D.M.T. ;F (;C)
BI50	Carbon Steel - Epoxy Coated	175 psi Water	-20 (-28.9)
	Carbon Steel	285 (19.65)	-20 (-28.9)
	Low Temp. Carbon Steel	285 (19.65)	-50 (-45.6)
	304 / 316 SS	275 (18.96)	-20 (-28.9) Optional -425 (-253.9)
B300	304L / 316L SS	230 (15.86)	-20 (-28.9) Optional -425 (-253.9)
	Carbon Steel	740 (51.02)	-20 (-28.9)
	Low Temp. Carbon Steel	740 (51.02)	-50 (-45.6)
	304 / 316 SS	720 (49.64)	-20 (-28.9) Optional -425 (-253.9)
B600	304L / 316L SS	600 (41.37)	-20 (-28.9) Optional -425 (-253.9)
	Carbon Steel	1480 (102.04)	-20 (-28.9)
	Low Temp. Carbon Steel	1480 (102.04)	-50 (-45.6)
	304 / 316 SS	1440 (99.28)	-20 (-28.9) Optional -425 (-253.9)
	304L / 316L SS	1200 (82.74)	-20 (-28.9) Optional -425 (-253.9)



Standard Screens

BI50		BI25	
Size Range	Opening	Size Range	Opening
2" - 8" (50mm - 200mm)	0.125 in. (3.2mm)	3" - 10" (80mm - 250mm)	0.25 in. (6.4mm)
10" - 12" (250mm - 300mm)	0.125 in. (3.2mm)		
14" - 24" (250mm - 600mm)	0.188 in. (4.8mm)		

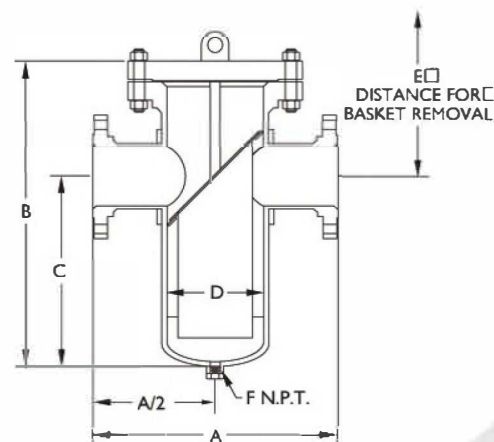
Dimensional Data

Size in. (mm)	A in. (mm)		B in. (mm)		C in. (mm)		D in. (mm)		E in. (mm)		F in. (mm)		G in. (mm)	Weight Lb. (kg.) Cover Unit			
	I	5	I	5	I	5	I	5	I	5	I	5	5	I	5	I	5
2" 50	12.75 324	-	18.63 473	-	11.13 283	-	6.63 168	-	25.00 635	-	1/2 15	-	-	26 12	-	85 39	-
3" 80	14.00 356	14.13 359	20.50 521	18.44 468	12.50 318	10.63 270	8.63 219	8.63 219	28.50 724	26.25 667	3/4 20	2 50	2.13 54	45 20	28 13	140 63	107 48
4" 100	16.00 406	21.00 533	22.25 565	18.44 468	14.00 356	10.63 270	8.63 219	8.63 219	30.50 775	26.25 667	1 25	2 50	2.13 54	45 20	28 13	145 66	142 64
5" 125	18.00 457	-	24.25 616	-	17.00 432	-	10.75 273	-	30.50 775	-	1 25	-	-	70 32	-	160 72	-
6" 150	20.00 508	26.88 683	26.50 673	20.19 513	17.00 432	11.06 281	10.75 273	14.00 356	36.00 914	29.32 745	1 25	3 80	3.00 76	70 32	64 29	205 93	303 137
8" 200	22.00 559	31.25 794	32.00 813	22.88 581	21.00 533	12.06 306	12.75 324	18.00 457	43.00 1092	33.70 856	1 1/2 40	3 80	3.00 76	110 50	143 65	420 190	398 180
10" 250	32.00 813	30.00 762	41.50 1054	27.13 689	25.00 635	14.81 376	16.00 406	20.00 508	58.00 1473	39.45 1002	1 1/2 40	3 80	3.25 83	180 82	184 83	650 294	463 210
12" 300	35.00 889	-	44.75 1137	-	28.00 711	-	18.00 457	-	61.50 1562	-	1 1/2 40	-	-	220 100	-	1205 546	-
14" 350	37.00 940	-	48.75 1238	-	33.00 838	-	20.00 508	-	64.50 1638	-	2 50	-	-	285 129	-	1600 725	-
16" 400	42.00 1067	-	54.25 1378	-	36.00 914	-	24.00 610	-	72.50 1842	-	2 50	-	-	430 195	-	1965 890	-
18" 450	46.50 1181	-	60.00 1524	-	40.00 1016	-	24.00 610	-	80.00 2032	-	2 50	-	-	430 195	-	2200 997	-
20" 500	52.00 1321	-	68.00 1727	-	46.00 1168	-	30.00 762	-	90.00 2286	-	2 50	-	-	965 437	-	3200 1450	-
24" 600	64.00 1626	-	82.75 2102	-	55.00 1397	-	36.00 914	-	110.50 2807	-	2 50	-	-	1540 698	-	4500 2039	-

Notes: I. Dimensions shown are subject to change.

Standard Screens

Size Range	Opening	Gauge Thickness
2" - 8" (50mm - 200mm)	0.125 in. (3.2mm)	22
10" - 12" (250mm - 300mm)	0.125 in. (3.2mm)	16
14" - 16" (350mm - 400mm)	0.188 in. (4.8mm)	11



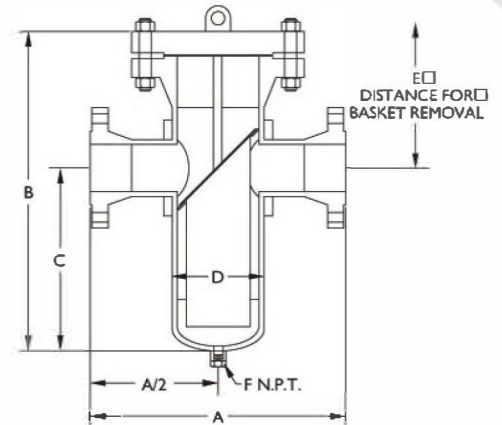
Dimensional Data (Classes 125, 250)

Size in. (mm)	A in. (mm)	B in. (mm)	C in. (mm)	D in. (mm)	E in. (mm)	F in. (mm)	Weight Lb. (kg.) Cover	Unit
2"	14.88	20.00	12.00	6.63	28.00	1/2	50	195
50	378	508	305	168	711	15	23	89
3"	16.50	25.00	15.75	8.63	34.25	3/4	81	250
80	419	635	400	219	870	20	37	114
4"	18.63	26.00	15.88	8.63	36.13	1	81	300
100	473	660	403	219	918	25	37	136
5"	20.25	28.00	17.13	10.75	38.88	1	125	400
125	514	711	435	273	987	25	57	182
6"	24.50	30.75	19.13	10.75	42.38	1	125	480
150	622	781	486	273	10.76	25	57	218
8"	24.88	35.50	22.00	12.75	55.75	1 1/2	185	681
200	632	902	559	324	1416	40	84	310
10"	35.38	42.50	27.25	16.00	57.25	1 1/2	295	1100
250	899	1080	692	406	1454	40	134	500
12"	39.38	47.75	30.38	18.00	65.12	1 1/2	395	1650
300	1000	1213	772	457	1654	40	179	750
14"	41.50	52.50	33.00	20.00	72.00	2	505	2600
350	1054	1334	838	508	1829	50	229	1182
16"	47.50	60.00	38.88	24.00	81.13	2	790	2750
400	1207	1524	988	610	2061	50	358	1250

Notes: 1. Dimensions shown are subject to change.

Standard Screens

Size Range	Opening	Gauge Thickness
2" - 8" (50mm - 200mm)	0.125 in. (3.2mm)	22
10" - 12" (250mm - 300mm)	0.125 in. (3.2mm)	16
14" - 16" (350mm - 400mm)	0.188 in. (4.8mm)	11



Dimensional Data

Size in. (mm)	A in. (mm)	B in. (mm)	C in. (mm)	D in. (mm)	E in. (mm)	F in. (mm)	Weight Lb. (kg) Cover	Unit
2"	18.38	21.88	12.00	6.63	31.75	1/2	86	245
50	467	556	305	168	806	15	39	111
3"	23.88	26.50	15.75	8.63	37.25	3/4	140	360
80	606	673	400	219	946	20	64	164
4"	23.88	29.00	17.38	8.63	44.63	1	140	400
100	606	737	441	219	1133	25	64	182
5"	28.13	32.13	19.13	10.75	45.13	1	230	750
125	714	816	486	273	1146	25	105	341
6"	29.88	36.25	21.38	10.75	51.13	1	230	825
150	759	921	543	273	1299	25	105	375
8"	37.00	38.75	23.38	12.75	54.13	1 1/2	295	1200
200	940	984	594	324	1375	40	134	545
10"	42.50	47.25	27.25	16.00	68.25	1 1/2	495	1600
250	1080	1200	692	406	1708	40	225	727
12"	44.00	53.25	30.38	18.00	76.13	1 1/2	630	1800
300	1118	1353	772	457	1934	40	286	818
14"	46.00	60.00	35.13	20.00	84.88	2	810	3000
350	1168	1524	892	508	2156	50	367	1364
16"	54.00	70.00	42.25	24.00	97.75	2	1250	3200
400	1372	1778	1073	610	2483	50	567	1455

Notes: 1. Dimensions shown are subject to change.